

<http://www.cardagroup.com/>

# Carda Group

As an international manufacturer, exporter and marketer of high-quality Examination Gloves, with the support of our clients, business partner and the effort of all Carda people, Carda has now become one of the world's largest rubber glove manufacturer, owing 4 factories, 32 production lines and a capacity of 2.8 billion latex & nitrile examination gloves annually.



As an OBM (own brand manufacturing) Examination Gloves Manufacturer, Carda has developed it's own successful medical brand-Docmax, which are recognized and trusted by hospitals, labs, doctors, pharmacists and surgeons around the world. Meanwhile, Glovemax- it's brand for general purpose disposable latex gloves, are widely known by customers.



Today, our workforce of 1,000+ staff has make us stronger to meet the requirements of our clients, to Maximize the convenience for our clients, Carda set up one financial center in Hong Kong and a marketing center-Guangzhou Carda Rubber Co., Ltd(China).



As the OEM manufacturer for some of the world's biggest brands, priority has been given to competitive prices, on-time delivery and outstanding services.



Currently, Carda Group exports gloves to over 72 countries and territories worldwide in the regions of America, Europe, Middle East, Asia, Africa and the South Pacific, working with 86 independent distributors, importers and wholesalers all around the world.

Docmax was built by Carda Group in 1999, comes from "Doctor" & "maximum", means providing maximum protection and comfort to doctors & medical professionals. Gloves under brand "Docmax" equal to strict protection and best comfort.



Lightly Pre-powdered  
Medical Latex Examination Gloves  
AQL 1.5

Powder Free  
Medical Latex Examination Gloves  
AQL 1.5



## Applications:

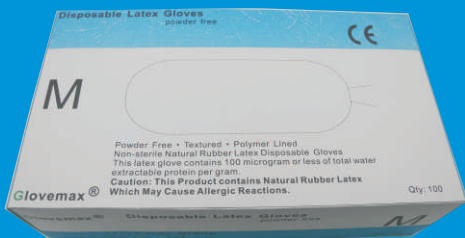
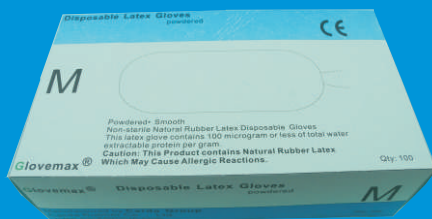
- \* Hospitals
- \* Clinics
- \* Dentists
- \* Pharmaceuticals
- \* Medical Offices
- \* Veterinary and Labs
- \* Care Centres etc.



Glovemax was built in 2003, to offer maximum protections to common people from unwanted substances.

With the living standards improving, more and more common people pay attention to protect their hands in daily life and work. To build a brand that common people can trust is a long-term process. After 11 years, Carda Group has built "Glovemax" as a customers-trust gloves brand for general purpose.

## Lightly Pre-powdered Disposable Latex Gloves AQL 2.5



## Powder Free Disposable Latex Gloves AQL 2.5

### Applications:

- \* Food Industry
- \* House cleaning
- \* Dish washing
- \* Planting
- \* Poultry raising
- \* Painting
- \* Decoration
- \* Hairdressing
- \* Pet care etc.



# Gloves Technical Specifications

## Features

- \* Design - Ambidextrous, straight fingers, beaded cuff, natural white.
- \* Storage - Stored in dry condition at temperature lower than 30°C.
- \* Shelf-life - 5 years from date of manufacturing.

## Benefits

- \* Protection from unwanted or dangerous substances.
- \* Beaded cuff makes donning easy and helping prevent rolling back.
- \* Softness provides superior comfort and natural fit.
- \* Higher strength and elasticity.

## Quality Standards

- \* AQL 1.5 for Docmax, AQL 2.5 for Glovemax.
- \* Conforms to EN455 & ASTM D3577 Standards.
- \* Manufactured under GMP, ISO9001 Quality Management System and ISO 13485.
- \* With FDA approved absorbable corn starch.

## Available Model

- \* size: XS, S, M, L, XL
- \* Weights: M 5.0 - M 6.5
- \* Indicated in the inner boxes & the shipping carton

## Dimensions

Length (mm)	240+	Elongation at break (%) * Before Aging * After Aging	650+ 500+
Width (mm) * XS * S * M * L * XL	78 ± 5 84 ± 5 94 ± 5 105 ± 5 113 ± 5	Tensile Strength (Mpa) * Before Aging * After Aging	18.0+ 14.0+
Thickness - single wall (mm) * Cuff * Fingers * Palm	0.10 above 0.13 above 0.16 above		

Nimax was created in 2005, to offer particular protection for people who are allergic to latex protein.

No matter doctors, professionals or common people, Nimax provides safe & comfortable protection for them.

### Applications:

- \* Hospitals
- \* Clinics
- \* Dentists
- \* Pharmaceuticals
- \* Medical Offices
- \* Veterinary and Labs
- \* Care Centres
- \* Food Industry
- \* House cleaning
- \* Dish washing
- \* Planting
- \* Poultry raising
- \* Painting
- \* Decoration
- \* Hairdressing
- \* Pet care etc.



### Benefits

- \* Protection from unwanted or dangerous substances.
- \* Effective protection from a wide range of chemicals and acid-base components.
- \* Beaded cuff makes donning easy and helping prevent rolling back.
- \* Softness provides superior comfort and natural fit.
- \* Higher strength and elasticity.

### Features

Type: Non-sterile, Powder Free

Material: Synthetic Nitrile Latex

Design: Ambidextrous, straight fingers, full/finger textured, beaded cuff, natural white or colored (blue/black/purple/pink/green).

Storage: Stored in dry condition at temperature lower than 30°C.

Shelf-life: 5 years from date of manufacturing.

### Quality Standards

- \* AQL 1.5.
- \* Conforms to EN455 & ASTM D63197 Standards.
- \* Manufactured under GMP, ISO9001 Quality Management System and ISO 13485.

### Available Model

- \* size: XS, S, M, L, XL
- \* Weights: M 3.0 - M 6.0
- \* Indicated in the inner boxes & the shipping carton

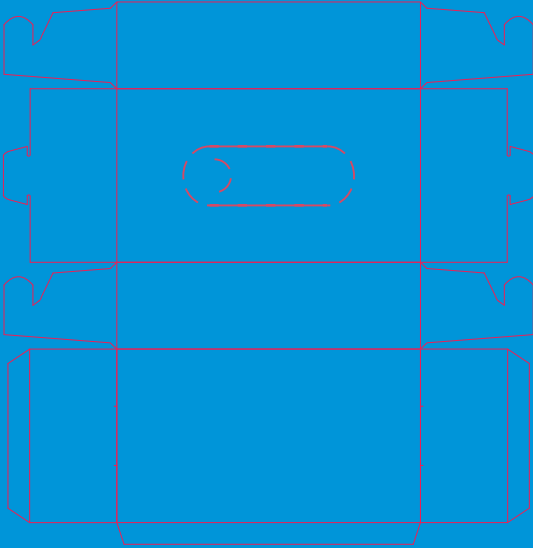
### Dimensions

Length (mm)	240+
Width (mm)	
* XS	78 ± 5
* S	84 ± 5
* M	94 ± 5
* L	105 ± 5
* XL	113 ± 5
Thickness - single wall (mm)	
* Cuff	0.08 above
* Fingers	0.09 above
* Palm	0.10 above

# OEM

Carda Group provides professional OEM service, which helps our OEM business partners to marketing their own brand in the local market. By this way, our partners will earn the added value.

Since the foundation, Carda Group have fulfilled it's commitments of protecting it's OEM partners business information.



## Added Service:

- Flexible Packing style(10/20/50, 100/200 pcs per box available.)
- Free artwork design
- Free printing block charge
- Free carton design

## Gloves Selection Guide

Type	Latex Gloves	Nitrile Gloves
Material	Natural Latex	Butyronitrile
Advantage	<ul style="list-style-type: none"><li>* Good elasticity and elongation, of high sensitivity</li><li>* Strong adhesion</li><li>* Low Pinhole rate, high air tightness</li><li>* Mature in application, widely used, high recognition among customer.</li></ul>	<ul style="list-style-type: none"><li>* Stable chemical properties</li><li>* Good resistance to acids and alkali</li><li>* Low Pinhole rate, high air tightness</li><li>* Free from latex protein allergic reaction</li><li>* Stable raw material Supply</li></ul>
Disadvantage	<ul style="list-style-type: none"><li>* Latex protein may cause allergic reaction</li><li>* Unstable supply of raw material</li></ul>	<ul style="list-style-type: none"><li>* Lower elasticity and elongation</li></ul>



# Carda Group

Head Quarter & Finance Center in Hong Kong

Address: FLAT/RM A30, 9/F SILVERCORP INTERNATIONAL TOWER,  
707-713 NATHAN ROAD, MONGKOK, KOWLOON,  
HONG KONG.

Globe Marketing Center: Guangzhou Carda Rubber Co., Ltd.

Tel: +86-20-2982 5956 Fax: +86-20-8067 8172

Email: [sales@cardagroup.com](mailto:sales@cardagroup.com)

Address: No. 8, Huangchun East Road, Tianhe District,  
Guangzhou, China. 510665

Factory 1:

Lot 10, Jalan Lada Sulah 16/15,  
40000 Shah Alam,  
Selangor Darul Ehsan, Malaysia

Factory 2:

30/2-3 Moo 12, Bangna-Trad Km.6 Road, Bang Kaeo,  
Bang Phli District,  
Samut Prakan 10540, Thailand

Factory 3:

PTD 3274 Batu 41/2, Jalan Bakri,  
84000 Muar, Johor, Malaysia.

Factory 4:

Lot PTD 16058, Kaw. Perindustrian Tangkak,  
84900 Tangkak, Johor, Malaysia.

<http://www.cardagroup.com/>

© Copyright 2014, Carda Group.

All rights reserved.